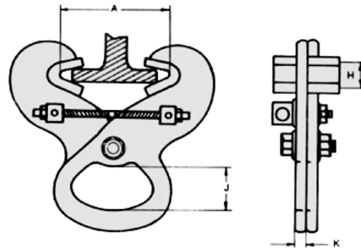




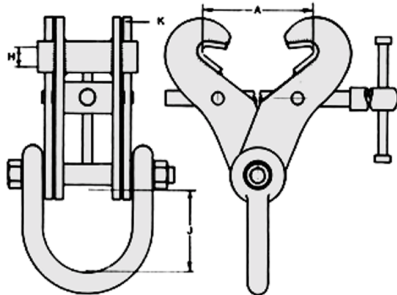
Beam Clamps



Permanently Fixed Adjustable Girder Clamps

- Designed for light industrial applications
- Ideal for permanent overhead anchor point above machinery or equipment
- Positive Grip on flange
- Lightweight one piece adjustable design
- For use at 0 degrees from vertical

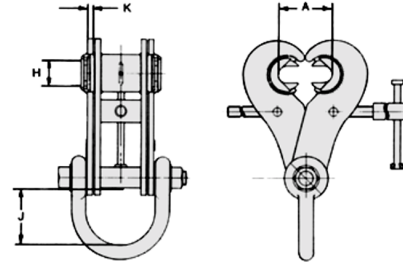
Model	WLL at 0° Vertical		Jaw Grip Adjustment inch min.-max	Jaw Aperture inch	Inside Shackle Crown to Spacer Inch	Average Weight Lbs
	Lbs	Kg				
PFC1	2240	1016	3"-7-1/2"	7/8"	1-1/2"	4.6
PFC2	4480	2032	3"-7-1/2"	7/8"	1-1/2"	5.5
PFC3	6720	3048	3"-7-1/2"	7/8"	1-1/2"	8.5



Fixed Jaw Adjustable Girder Clamps

- One piece adjustable design
- Used for lifting, pulling or as an anchor point
- No tools required for mounting/removal
- Integrated lifting shackle
- Positive Grip left/right threaded adjusting bar
- Designed with maximum safe jaw grip adjustment
- For use at up to 15 degrees from vertical
- **Approved for Personnel tie-off use**

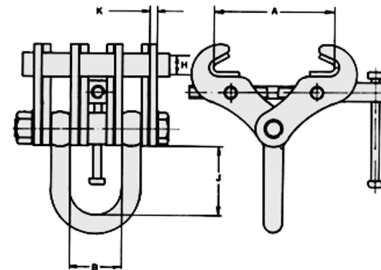
Model	WLL at 0-15° Vertical		Jaw Grip Adjustment inch min.-max	Jaw Aperture inch	Inside Shackle Crown to Spacer Inch	Average Weight Lbs
	Lbs	kg				
S1	4480	2032	3"-7-1/2"	7/8"	3-3/4"	8.8
S2	6720	3048	3"-7-1/2"	7/8"	3-3/4"	11.3
S2A	6720	3048	3"-7-1/2"	7/8"	3-3/4"	16.3
S3	8960	4064	6"-10"	7/8"	3-9/10"	22.9
S3X	11200	5080	3"-7-1/2"	7/8"	4-1/8"	19.9
S3A	11200	5080	6"-12"	1-5/8"	4-1/8"	36
S4S	13440	6096	8"-18"	1-5/8"	4-1/8"	41.5
S4A	22400	10160	8"-18"	1-5/8"	5-1/8"	60.2
S12	33601	15241	8"-18"	2"	5-7/8"	118.4
S14	33601	15241	16"-24"	2-1/2"	5-7/8"	139



Swivel Jaw Adjustable Girder Clamps

- One piece adjustable design
- Used for lifting, pulling an anchor point
- Added benefit of horizontal jaw adjustment
- Full length/width of swivel jaw anchors on flange
- Integrated lifting shackle
- Positive Grip left/right threaded adjusting bar
- For use at up to 15 degrees from vertical
- **Approved for Personnel tie-off use**

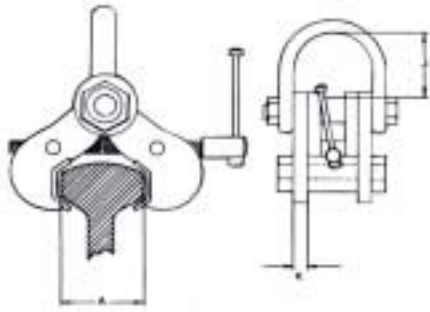
Model	WLL at 0-15° Vertical		Jaw Grip adjustment inch min.-max	Jaw Aperture inch	Inside Shackle Crown to Spacer Inch	Average Weight Lbs.
	Lbs.	Kg				
S5	6720	3048	3-1/2"-12"	1"	3-3/4"	22.0
S5A	6720	3048	3-1/2"-12"	1"	4-1/2"	30.4
S6	11200	5080	3-1/2"-12"	1"	4-1/2"	30.4
S6A	11200	5080	3-1/2"-12"	1"	4-1/2"	33.5
S11	22400	10160	3-1/2"-12"	1"	5-1/8"	45.4



Fixed Jaw Adjustable Girder Dog

- One piece adjustable design
- Used for lifting, pulling as an anchor point
- Enhanced by balanced distribution of side points
- Maximum grip & hold and safety
- No tools required
- Positive Grip left/right threaded adjusting bar
- For use at up to 15 degrees from vertical
- **Approved for Personnel tie-off use**

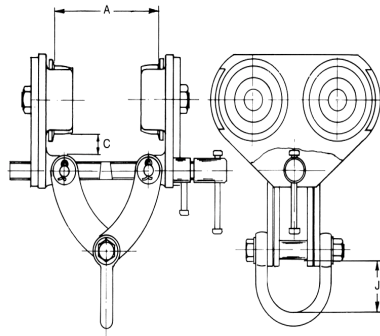
Model	WLL at 0-15° Vertical		Jaw Grip Adjustment inch min.-max	Jaw Aperture inch	Inside Shackle Crown to Spacer inch	Inside Shackle Width Inch	Average Weight Lbs.
	Lbs	Kg					
S15	44800	20320	8"-18"	2"	8"-1/4"	4-1/2"	139.1
S16	44800	20320	16"-24"	2-1/2"	8"-1/4"	4-1/2"	175.2
S17	56000	25400	8"-18"	2"	8-1/8"	5"	156.6
S18	56000	25400	16"-24"	2-1/2"	8-1/8"	5"	199.0
S19	67200	30480	8"-18"	2-1/2"	8"-1/8"	5"	207.6
S20	67200	30480	16"-24"	3"	8"-1/8"	5"	238.8



Adjustable Universal Rail Lifting Clamps

- Designed to grip on all standard AREA Rail & Crane Rail
- Positive Grip through left/right threaded adjusting bar
- Lightweight & versatile adjustability
- No tools required
- Integrated lifting shackle
- Ideal for construction, erection and maintenance

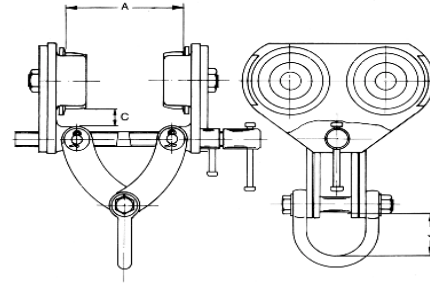
Model	WLL at 0° Vertical		Jaw Grip Adjustment	Inside Shackle Crown to Spacer	Average Weight Lbs.
	Lbs	Kg			
R1	6720	3048	STD AREA Rail & Crane Rail	3-3/4"	13.2
R2	11200	5080		4-1/8"	17.0



Adjustable Runway Beam Trolleys with Anti-Drop Plates

- Lightweight hand push, easy to use ball bearing wheels
- Developed for lighter industrial applications
- Adapts to beam width by turning left and right hand adjusting bar
- Fitted with width adjustment locking mechanism
- Wheel guarding anti-drop plates
- No additional width adjusting tools required
- Positive Grip Clamps
- **Approval for personnel tie-off use***

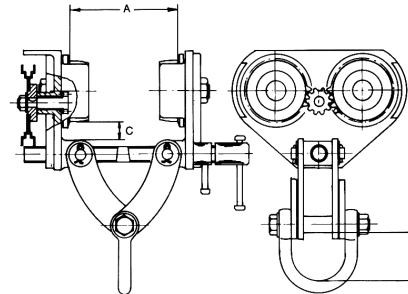
MODEL	WLL at 0° Vertical		Width Adjustment inch min.-max	To Accommodate Beam Flange Thickness (max) inch	Inside Shackle Crown to Spacer inch	Average Weight Lbs.
	Lbs	Kg				
BA1	2240	1016	2-1/2"-8"	1"	3-1/2"	14.3
BA2	3360	1524	3"-8"	1"	3-1/2"	15.9
BA3	4480	2032	3"-8"	1"	3-1/2"	15.9



Adjustable Runway Beam Trolley w/ Anti-Drop Plates

- One piece adjustable design
- Hand push, easy to use, ball bearing wheels
- Adapts to beam width by turning left/right hand threaded adjusting screw
- Includes locking collar and wheel guard anti-drop plates for maximum safety
- Integrated lifting shackle
- No tools required
- Ideal for temporary and permanent installations requiring speedy installation and use
- **Approval for personnel tie-off use***

Model	WLL at 0° Vertical		Width Adjustment Inch Min-Max	To Accommodate Beam Flange Thickness (max) inch	Inside Shackle Width inch	Average Weight Lbs
	Lbs	Kg				
B1	6720	3048	3"-8"	1"-1/8"	4"	50
B2	13440	6096	4"-12"	1"-1/4"	4"	113
B3	22400	10160	1"-1/2"	1"-1/2"	5 1/8"	158.7



Geared Runway Beam Trolley w/Anti-Drop Plates

- One piece adjustable design
- Hand geared for easy movement of heavy loads
- Ball bearing wheel movement
- Integrated lifting shackle
- Adapts to beam width by turning left/right hand threaded adjusting screw
- Includes locking collar and wheel guard anti-drop plates for maximum safety
- Ideal for temporary and permanent installations requiring speedy installation and use
- **Approval for personnel tie-off use***

MODEL	WLL at 0° Vertical		Width Adj. Inch Min-Max	To Accommodate Beam Flange Thickness (max) inch	Inside Shackle Width (in.)	Average Weight Lbs
	Lbs	Kg				
GBT1	6720	3048	3"-8"	1 1/8"	4"	70.5
GBT2	13440	6096	4"-12"	1 1/4"	4"	122.3
GBT3	22400	10160	4"-12"	1 1/2"	5 1/8"	168.7
GBT4	33600	15270	8"-18"	3"	8"	300.0
GBT5	44800	20363	8"-18"	3"	8 3/4"	358.0