



Hoist Rings

American Safety Engineered Hoist Rings

Competitive products are assembled by drilling a hole through the shoulder pin and securing it to the body with a “roll pin”.

ADB uses shoulder pin retainers instead of roll pins to captivate the shoulder pins, on sizes up to 10,000 lbs. load rating. On the larger sizes, we use shoulder pin retaining dowels.

What you see below, IS NOT WHAT YOU GET FROM COMPETITIVE HOIST RINGS!
This is ADB’s original patented improved Safety Engineered Hoist Ring.

These processes DO NOT require putting a hole through the shoulder pin, we use an OD groove. This allows the pin to rotate if necessary without shearing the dowel or clip. ADB uses only hardened dowel pins for assembly of hoist rings. If the shoulder pin should bind against the bail for any reason (accumulation of dirt, rust, improper loading etc.) the shoulder pin installed with a roll pin is likely to shear, allowing the shoulder pin to come out. This is not the case with ADB hoist rings.

This patented design allows the ADB hoist ring to be disassembled, tested for compliance with safety standards AND reassembled easily. This is a requirement by some governmental agencies. ADB provides the EXTRAS you expect, at no added cost to you, from the leader of quality lifting devices. ADB the “original” Safety Hoist Ring.

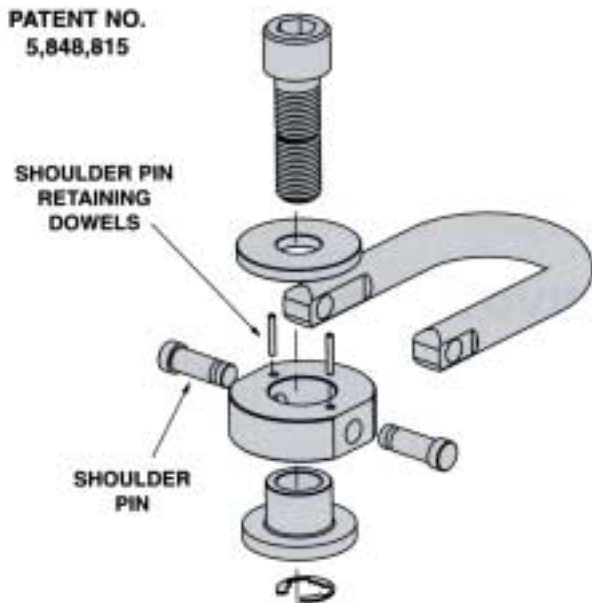
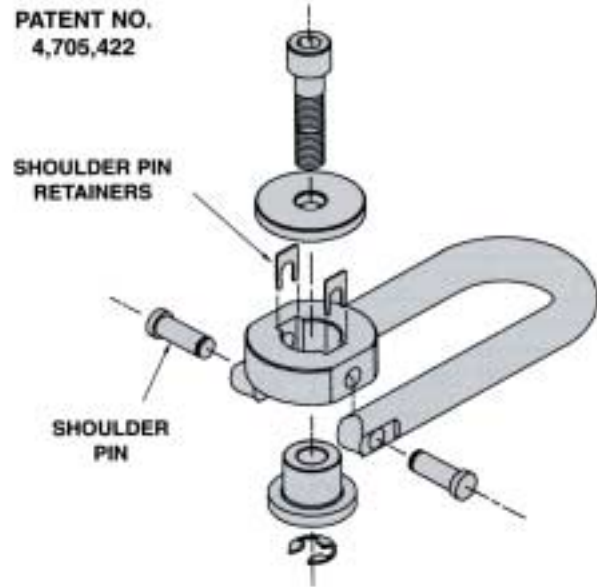
ADB & ONLY ADB CAN OFFER YOU THIS SAFETY ADVANTAGE.

DON’T ACCEPT LOOK ALIKE IMITATIONS!
40 years without a single claim.

No other manufacturer can make that statement.

SAFETY ENGINEERED HOIST RINGS:

- Pivot and swivel to compensate for pitch, roll and sway when lifting heavy, unbalanced loads.
- Prevent lifting hooks from disengaging.
- Made of highest quality alloy steel with certified heat treatment.
- Available in 550, 800, 1,000, 2,500, 4,000, 5,000, 7,000, 8,000, 10,000, 15,000, 24,000, 30,000, 50,000, 75,000, 100,000, 150,000, 200,000 and 250,000 pound safe-load capacities (in any direction).



American’s Safety Hoist Rings have been design tested. Certified Test Reports are available upon request.

PATENT NO. 3,297,293, 4,705,422 5,848,815



Safety Engineered Hoist Rings

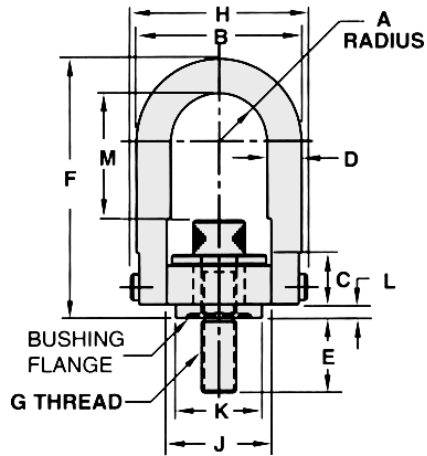
TECHNICAL INFORMATION

HOIST RING MATERIAL: Alloy steel (Certified heat treatment). Black Oxide*.

SAFETY FACTORS: 5:1

RANGE OF MOVEMENT: 360° Swivel, 180° Pivot.

INSTALLATION: Tap workpiece for hoist ring screw with axis vertical to mounting surface. Work surface should be flat and smooth to provide full 360 degrees flush seating for the bushing flange. (SAFETY NOTE : Some loosening may develop after prolonged service in a permanent installation. It is advisable to periodically re-tighten the mounting screw to maintain the specified torque value.) The use of free fit spacers between the bushing flange and mounting surface is not recommended as this will reduce the safe load rating on angularly applied loads. Hoist Ring must be free to swivel 360 degrees and pivot 180 degrees at all times.



*Also available in Nickel or Cad Plated. (Price per Factory Quotation)
All dimensions approximate- variations do not affect use or safety factor.

Part Number	Rated Load	A	B	C	D	E	F	G	H	J	K	L	M	TL* Foot- Lbs.	Weight
23050	550	.43	1.61	.71	3/8	.54	2.67	1/4-20	1.84	1.00	.75	.17	1.33	5	5 oz.
2305100051	800	.43	1.61	.71	3/8	.29	2.67	5/16-18	1.84	1.00	.75	.17	1.27	7	5 oz.
2305200051	800	.43	1.61	.71	3/8	.54	2.67	5/16-18	1.84	1.00	.75	.17	1.27	7	5 oz.
2305300051	1000	.43	1.61	.71	3/8	.54	2.67	3/8-16	1.84	1.00	.75	.17	1.21	12	5 oz.
2330100051	2500	.70	2.40	.93	1/2	1.07	3.77	1/2-13	2.58	1.49	1.25	.20	1.84	28	1 lb.
2300400051	2500	.88	3.25	1.22	3/4	.78	4.78	1/2-13	3.52	1.99	1.50	.16	2.31	28	2 lb. 5 oz.
2332200051	2500	.88	3.25	1.22	3/4	.78	6.72	1/2-13	3.52	1.99	1.50	.16	4.25	28	2 lb. 12 oz.
2300500051	2500	.88	3.25	1.22	3/4	1.03	4.78	1/2-13	3.52	1.99	1.50	.16	2.31	28	2lb. 5 oz.
2332300051	2500	.88	3.25	1.22	3/4	1.03	6.72	1/2-13	3.52	1.99	1.50	.16	4.25	28	2 lb.
2300600051	2500	.88	3.25	1.22	3/4	1.28	4.78	1/2-13	3.52	1.99	1.50	.16	2.31	28	2lb. 5 oz.
2332400051	2500	.88	3.25	1.22	3/4	1.28	6.72	1/2-13	3.52	1.99	1.50	.16	4.25	28	2 lb. 12 oz.
2300100051	4000	.88	3.25	1.22	3/4	.78	4.78	5/8-11	3.52	1.99	1.50	.16	2.18	60	2 lb. 7 oz.
2300200051	4000	.88	3.25	1.22	3/4	1.03	4.78	5/8-11	3.52	1.99	1.50	.16	2.18	60	2 lb. 7 oz.
2332000051	4000	.88	3.25	1.22	3/4	1.03	6.72	5/8-11	3.52	1.99	1.50	.16	4.12	60	2 lb. 14 oz.
2300300051	4000	.88	3.25	1.22	3/4	1.28	4.78	5/8-11	3.52	1.99	1.50	.16	2.18	60	2 lb. 7 oz.
2332100051	4000	.88	3.25	1.22	3/4	1.28	6.72	5/8-11	3.52	1.99	1.50	.16	4.12	60	2 lb. 14 oz.
2300700051	5000	.88	3.25	1.22	3/4	1.03	4.78	3/4-10	3.52	1.99	1.50	.16	2.06	100	2 lb. 9 oz
2332500051	5000	.88	3.25	1.22	3/4	1.03	6.72	3/4-10	3.52	1.99	1.50	.16	4.00	100	3 lb
2300900051	5000	.88	3.25	1.22	3/4	1.53	4.78	3/4-10	3.52	1.99	1.50	.16	2.06	100	2 lb. 9 oz
2332700051	5000	.88	3.25	1.22	3/4	1.53	6.72	3/4-10	3.52	1.99	1.50	.16	4.00	100	3 lb
2310200051	7000	1.40	4.80	1.71	1"	1.04	6.52	3/4-10	5.14	3.00	2.37	.24	3.06	100	6 lb. 10 oz.
23329	7000	1.40	4.80	1.71	1"	1.04	8.11	3/4-10	5.14	3.00	2.37	.24	4.65	100	7 lb. 4 oz.
2310300051	7000	1.40	4.80	1.71	1"	1.54	6.52	3/4-10	5.14	3.00	2.37	.24	3.06	100	6 lb. 10 oz
23330	7000	1.40	4.80	1.71	1"	1.54	8.11	3/4-10	5.14	3.00	2.37	.24	4.65	100	6 lb. 10 oz.
2310100051	8000	1.40	4.80	1.71	1"	1.04	6.52	7/8-9	5.14	3.00	2.37	.24	2.93	160	6 lb. 12 oz.
2332800051	8000	1.40	4.80	1.71	1"	1.04	8.11	7/8-9	5.14	3.00	2.37	.24	4.52	160	6 lb. 12 oz
2310500051	10000	1.40	4.80	1.71	1"	1.29	6.52	1"-8	5.14	3.00	2.37	.24	2.81	230	7 lb.
2333100051	10000	1.40	4.80	1.71	1"	1.29	8.11	1"-8	5.14	3.00	2.37	.24	4.40	230	7 lb.
2310600051	10000	1.40	4.80	1.71	1"	1.54	6.52	1"-8	5.14	3.00	2.37	.24	2.81	230	7 lb.
2333200051	10000	1.40	4.80	1.71	1"	1.54	8.11	1"-8	5.14	3.00	2.37	.24	4.40	230	7 lb.
2310700051	10000	1.40	4.80	1.71	1"	2.29	6.52	1"-8	5.14	3.00	2.37	.24	2.81	230	7 lb.
2333300051	10000	1.40	4.80	1.71	1"	2.29	8.11	1"-8	5.14	3.00	2.37	.24	4.40	230	7 lb.
23401	15000	1.75	6.00	2.11	1-1/4	1.89	8.73	1-1/4"-7	6.50	3.76	3.20	.35	4.12	470	14 lb.
23202	24000	2.25	8.00	2.81	1-3/4	2.70	12.47	1-1/2"-6	8.55	4.87	4.20	.47	6.41	800	33 lb. 12 oz
23200	30000	2.25	8.00	2.81	1-3/4	2.96	12.47	2"-4-1/2	8.55	4.87	4.20	.47	5.41	800	36 lb
23501	50000	3.00	10.50	4.09	2-1/4	4.00	16.87	2-1/2"-8	11.67	6.52	5.75	1.12	8.03	2100	87 lb. 8 oz
23503	50000	3.00	10.50	4.09	2-1/4	4.00	16.87	2-1/2"-4	11.67	6.52	5.75	1.12	8.03	2100	87 lb. 8 oz
23600	75000	3.75	13.00	5.27	2-3/4	5.20	19.50	3"-4	14.15	8.10	7.25	1.00	8.48	4300	166 lb
23701	100000	4.00	14.50	6.06	3-1/4	7.00	22.09	3-1/2"-4	15.90	8.60	7.75	1.09	9.28	6600	240 lb

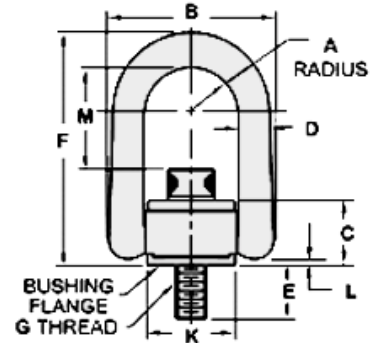


Heavy Duty® Hoist Rings



COMPLETE LINE THROUGH 30,000 POUNDS LOAD RANGE

- MATERIAL: Forged Alloy Steel with Minimum Tensile Strength of 180,000 psi.
- Range of movement: Pivot 180 degrees, Swivel 360 degrees
- MINIMUM SAFETY FACTOR =5:1
- Meets Military Specification No. MIL-STD 1365(11) or MIL-STD 209C
- Meets ANSI/ASME B30.20 section 20-1.2.2
- American HEAVY DUTY® Hoist Rings are specified and used in Nuclear Energy Equipment.
- 100% Magnetic Particle Inspected
- Meets OSHA Standards
- Destructive testing by outside independent



Patent No. 4,570,987, 4,641,986, 5,405,210, Other Patents Pending

PART NO.	RATED LOAD	A	B	C	D	E	F	G	K	L	M	TL* ft/lb	WT lbs
33112	550	.65	2.29	.96	.44	.56	3.23	1/4-20	1.25	.15	1.57	5	.50
3321200051	800	.65	2.29	.96	.44	.56	3.23	5/16-18	1.25	.15	1.51	7	.52
33214	800	.65	2.29	.96	.44	1.06	3.23	5/16-18	1.25	.15	1.51	7	.54
3331200051	1000	.65	2.29	.96	.44	.56	3.23	3/8-16	1.25	.15	1.45	12	.56
3331400051	1000	.65	2.29	.96	.44	1.06	3.23	3/8-16	1.25	.15	1.45	12	.58
33316	2250	.65	2.29	.96	.44	1.06	3.23	1/2-13	1.25	.15	1.45	25	.60
33512	2500	1.00	3.50	1.50	.75	.75	5.31	1/2-13	1.89	.17	2.56	28	1.71
+33513	2500	1.00	3.50	1.50	.75	.75	6.87	1/2-13	1.89	.17	4.12	28	2.04
33515	2500	1.00	3.50	1.50	.75	1.00	5.31	1/2-13	1.89	.17	2.56	28	1.72
+33505	2500	1.00	3.50	1.50	.75	1.00	6.87	1/2-13	1.89	.17	4.12	28	2.05
3351600051	2500	1.00	3.50	1.50	.75	1.25	5.31	1/2-13	1.89	.17	2.56	28	1.82
+33517	2500	1.00	3.50	1.50	.75	1.25	6.87	1/2-13	1.89	.17	4.12	28	2.15
33612	4000	1.00	3.50	1.50	.75	.75	5.31	5/8-11	1.89	.17	2.44	60	1.76
+33613	4000	1.00	3.50	1.50	.75	.75	6.87	5/8-11	1.89	.17	4	60	2.09
3361400051	4000	1.00	3.50	1.50	.75	1.00	5.31	5/8-11	1.89	.17	2.44	60	1.78
+33604	4000	1.00	3.50	1.50	.75	1.00	6.87	5/8-11	1.89	.17	4	60	2.11
3361500051	4000	1.00	3.50	1.50	.75	1.25	5.31	5/8-11	1.89	.17	2.44	60	1.88
+33616	4000	1.00	3.50	1.50	.75	1.25	6.87	5/8-11	1.89	.17	4	60	2.21
3371400051	5000	1.00	3.50	1.50	.75	1.00	5.31	3/4-10	1.89	.17	2.31	100	1.89
+33715	5000	1.00	3.50	1.50	.75	1.00	6.87	3/4-10	1.89	.17	3.87	100	2.22
3371600051	5000	1.00	3.50	1.50	.75	1.50	5.31	3/4-10	1.89	.17	2.31	100	2.02
+33717	5000	1.00	3.50	1.50	.75	1.50	6.87	3/4-10	1.89	.17	3.87	100	2.35
33108	7000	1.40	5.10	2.05	1.00	.95	7.37	3/4-10	2.81	.18	3.57	100	7.20
+33168	7000	1.40	5.10	2.05	1.00	.95	9.00	3/4-10	2.81	.18	5.20	100	7.93
3310200051	7000	1.40	5.10	2.05	1.00	1.20	7.37	3/4-10	2.81	.18	3.57	100	7.23
+33162	7000	1.40	5.10	2.05	1.00	1.20	9.00	3/4-10	2.81	.18	5.20	100	7.96
3310300051	7000	1.40	5.10	2.05	1.00	1.45	7.37	3/4-10	2.81	.18	3.57	100	7.25
+33163	7000	1.40	5.10	2.05	1.00	1.45	9.00	3/4-10	2.81	.18	5.20	100	7.98
33104	8000	1.40	5.10	2.05	1.00	.95	7.37	7/8-9	2.81	.18	3.32	160	7.33
+33164	8000	1.40	5.10	2.05	1.00	.95	9.00	7/8-9	2.81	.18	4.95	160	8.06
3310100051	8000	1.40	5.10	2.05	1.00	1.20	7.37	7/8-9	2.81	.18	3.32	160	7.33
+33161	8000	1.40	5.10	2.05	1.00	1.20	9.00	7/8-9	2.81	.18	4.95	160	8.06
3310500051	10000	1.40	5.10	2.05	1.00	1.45	7.37	1-8	2.81	.18	3.20	230	7.57
+33165	10000	1.40	5.10	2.05	1.00	1.45	9.00	1-8	2.81	.18	4.82	230	8.30
3310600051	10000	1.40	5.10	2.05	1.00	1.20	7.37	1-8	2.81	.18	3.20	230	7.63
+33166	10000	1.40	5.10	2.05	1.00	1.20	9.00	1-8	2.81	.18	4.82	230	8.36
33107	10000	1.40	5.10	2.05	1.00	2.20	7.37	1-8	2.81	.18	3.20	230	7.81
+33167	10000	1.40	5.10	2.05	1.00	2.20	9.00	1-8	2.81	.18	4.82	230	8.54
33402	15000	2.00	6.75	2.87	1.25	1.88	9.22	1 1/4-7	3.88	.18	3.74	470	15.74
3340100051	15000	2.00	6.75	2.87	1.25	2.63	9.22	1 1/4-7	3.88	.18	3.74	470	16.0
33420	20000	2.00	6.75	2.87	1.25	2.63	9.22	1 3/8-6	3.88	.32	3.62	670	17.2
3342400051	24000	2.00	6.75	2.87	1.25	2.63	9.22	1 1/2-6	3.88	.32	3.49	800	18.1
33427	30000	2.00	6.75	2.87	1.25	2.96	9.22	2-4 1/2	3.88	.32	3.49	800	22.9
33432	30000	2.00	6.75	2.87	1.25	2.96	9.22	2-8	3.88	.32	3.49	800	22.9

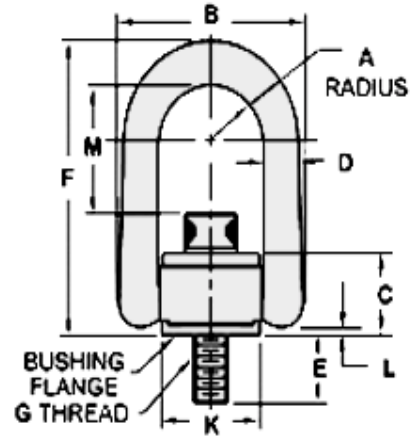
+ Long Bar Models

* Recommended Torque Load



Heavy Duty Hoist Rings - METRIC

- MATERIAL: Forged Alloy Steel With Minimum Tensile Strength of 1200 N/mm.
- Range of movement: Pivot 180 degrees, Swivel 360 degrees.
- Minimum SAFETY FACTOR=5:1
- Meets Military Specification No. MIL-STD 1365(11) or MIL-STD 209 C
- Meets ANSI/ASME B30.20 section 20-1.2.2
- American HEAVY DUTY® Hoist Rings are specified and used in Nuclear Energy Equipment.
- 100% magnetic particle inspected.
- Meets OSHA Standards.



Patent No. 4,570,987, 4,641,986, 5,405,210, Other Patents Pending

PART NO.	RATED LOAD (kg)	A	B	C	D	E	F	G	K	L	M	TL* (Nm)	WT (kg)
34212	400	16.5	58.2	24.4	11.1	16	82.0	M8x1.25	31.8	4.0	38.5	9.5	.24
34214	400	16.5	58.2	24.4	11.1	21	82.0	M8x1.25	31.8	4.0	38.5	9.5	.25
34312	450	16.5	58.2	24.4	11.1	16	82.0	M10x1.5	31.8	4.0	36.5	16.0	.25
34314	450	16.5	58.2	24.4	11.1	26	82.0	M10x1.5	31.8	4.0	36.5	16.0	.26
34515	1050	25.4	88.9	38.1	19.1	25	134.9	M12x1.75	48.0	4.4	65.0	37.0	.78
+ 34505	1050	25.4	88.9	38.1	19.1	25	174.6	M12x1.75	48.0	4.4	104.7	37.0	.93
34516	1050	25.4	88.9	38.1	19.1	32	134.9	M12x1.75	48.0	4.4	65.0	37.0	.83
+ 34517	1050	25.4	88.9	38.1	19.1	32	174.6	M12x1.75	48.0	4.4	104.7	37.0	.98
34614	1900	25.4	88.9	38.1	19.1	25	134.9	M16x2.0	48.0	4.4	62.0	80.0	.81
+ 34604	1900	25.4	88.9	38.1	19.1	25	174.6	M16x2.0	48.0	4.4	101.7	80.0	.96
34615	1900	25.4	88.9	38.1	19.1	32	134.9	M16x2.0	48.0	4.4	62.0	80.0	.85
+ 34616	1900	25.4	88.9	38.1	19.1	32	174.6	M16 x 2.0	48.0	4.4	101.7	80.0	1.00
34714	2200	25.4	88.9	38.1	19.1	25	134.9	M20x2.5	48.0	4.4	58.7	135.0	.86
+ 34715	2200	25.4	88.9	38.1	19.1	25	174.6	M20x2.5	48.0	4.4	98.4	135.0	1.01
34716	2200	25.4	88.9	38.1	19.1	38	134.9	M20x2.5	48.0	4.4	58.7	135.0	.92
+ 34717	2200	25.4	88.9	38.1	19.1	38	174.6	M20x2.5	48.0	4.4	98.4	135.0	1.07
34101	3000	35.6	129.5	52.1	25.4	28	187.2	M20x2.5	71.4	4.6	89.7	135.0	3.14
+ 34161	3000	35.6	129.5	52.1	25.4	28	228.6	M20x2.5	71.4	4.6	131.1	135.0	3.47
34102	4200	35.6	129.5	52.1	25.4	28	187.2	M24x3.0	71.4	4.6	85.7	311.0	3.29
+ 34162	4200	35.6	129.5	52.1	25.4	28	228.6	M24x3.0	71.4	4.6	127.1	311.0	3.62
34103	4200	35.6	129.5	52.1	25.4	38	187.2	M24x3.0	71.4	4.6	85.7	311.0	3.30
+ 34163	4200	35.6	129.5	52.1	25.4	38	228.6	M24x3.0	71.4	4.6	127.1	311.0	3.63
34105	4500	35.6	129.5	52.1	25.4	38	187.2	M30x3.5	71.4	4.6	79.7	311.0	3.44
+ 34165	4500	35.6	129.5	52.1	25.4	38	228.6	M30x3.5	71.4	4.6	121.2	311.0	3.77
34107	4500	35.6	129.5	52.1	25.4	48	187.2	M30x3.5	71.4	4.6	79.7	311.0	3.55
+ 34167	4500	35.6	129.5	52.1	25.4	48	228.6	M30x3.5	71.4	4.6	121.1	311.0	3.88
34401	7000	50.8	171.5	72.9	31.8	67	234.2	M30x3.5	98.5	8.2	95.0	637.2	7.26
34402	11000	50.8	171.5	72.9	31.8	67	234.2	M36x4.0	98.5	8.2	88.6	1085.5	8.21
34403	12500	50.8	171.5	72.9	31.8	80	234.2	M42x4.5	98.5	8.2	88.6	1085.5	10.14
34404	13500	50.8	171.5	72.9	31.8	80	234.2	M48x5.0	98.5	8.2	88.6	1085.5	10.59
+ Long Bar Models		* Recommended Torque Load											



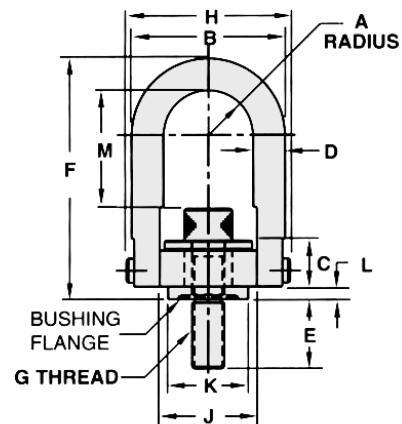
EZ-Torque™ Hoist Ring



Patent 6,199,925

- ADB, the originator and leader in safety hoist rings, introduces another time and money saving innovation.
- ADB's new EZ-Torque™ Hoist Ring eliminates the need of locating and installing hydraulic torque multipliers for large hoist ring installations.
- A 75,000 lb. rated load hoist ring requires the mounting screw to be torqued to 4,300 ft. lbs. Using ADB's EZ-Torque Hoist Ring requires only a standard torque wrench and 92 ft.lbs. of torque per bolt!
- Hoist Ring Material: Alloy steel (certified heat treatment)
- Black Oxide*
- Safety Factor 5:1
- Range of Movement: 360° Swivel, 180° Pivot

* Also available in a wide range of plating- e.g. Cadmium, Titanium-Cadmium, Nickel, etc.



EZ-Torque™ Hoist Ring Dimensions

Part No.	Rated Load	A	B	C	D	E +/- .12	F +/- .12	G	H +/- .12	J	K	L	M	*TL ft-lb	**Easy-Torque ft-lb
23490	15,000	1.75	6.0	2.11	1 1/4	1.89	8.73	1-1/4"-7	6.50	3.76	3.20	0.35	3.88	470	10
23494	24,000	2.25	8.0	2.81	1 3/4	2.70	12.47	1-1/2"-6	8.55	4.87	4.20	0.47	6.12	800	18
23290	30,000	2.25	8.0	2.81	1 3/4	2.96	12.47	2"-4-1/2	8.55	4.87	4.20	0.47	6.12	800	23
23590	50,000	3.00	10.5	4.09	2 1/4	4.00	16.87	2-1/2"-8	11.67	6.52	5.75	1.12	7.73	2100	49
23592	50,000	3.00	10.5	4.09	2 1/4	4.00	16.87	2-1/2"-4	11.67	6.52	5.75	1.12	7.73	2100	49
23690	75,000	3.75	13.0	5.27	2 3/4	5.20	19.50	3"-4	14.15	8.10	7.25	1.00	8.53	4300	92
23790	100,000	4.00	14.5	6.06	3 1/4	7.00	22.09	3-1/2"-4	15.90	8.60	7.75	1.09	9.28	6600	98
23792	150,000	5.00	18.0	7.50	4	8.50	27.38	4 1/4"-4	19.69	10.75	9.87	1.33	12.93	12000	123
23794	200,000	6.00	22.0	9.00	5	9.00	33.00	5"-4	24.00	13.00	12.38	1.88	15.00	19800	193
23798	250,000	6.00	22.0	9.00	5	9.00	33.00	6"-4	24.00	13.00	12.38	1.88	15.00	29000	207

* Standard Torque Load

** EZ-Torque™

All dimensions approximate - variations do not effect use or safety factor.



ACTEK Street Plate Lifting Ring

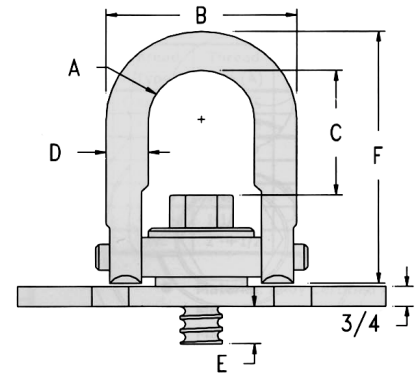
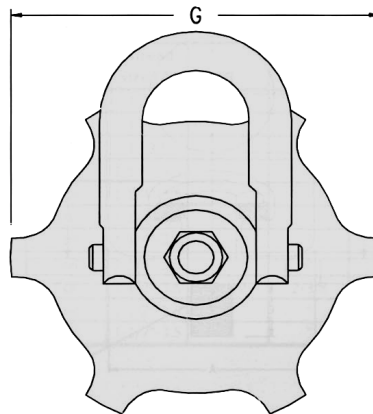
NEW STREET PLATE LIFTING SYSTEM OFFERS THE FASTEST AND SAFEST METHOD OF HANDLING TRENCH PLATES.

These street plate lifting rings enable faster and safer handling of heavy steel plates commonly used to cover trenches and excavations in streets and roadways during construction repair. Because these rings can swivel 360 degrees and pivot 180 degrees, the rigger can leave the rings on the hook while attaching it into the steel plate, and the operator can pull at any angle without compromising the strength. They are designed for quick, simple attachment with the star-shaped drive lugs for easy tightening and removal; no tools are required. There are no loose pins or clips to break or fall out.

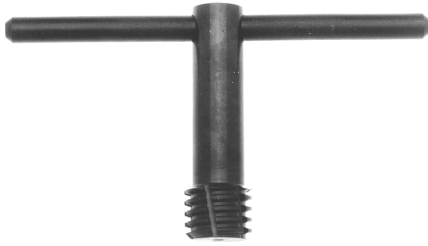


Forged Steel Lifting Ring

- Magnetic Particle Inspected
- Certified Heat Treated
- Swivels 360 degrees- Pivots 180 degrees
- Material: Alloy Certified Aircraft Quality
- Safety Factor: 5:1
- Finish: Phosphate per DOD-P-16232F
- 200% Proof-Load Tested
- Patented - File #6,161,884



Part No.	Rated Load (lbs)	A	B	C	D	E	F	G	Thread Type	Thread Size	Torque Ft/Lbs
38215	10000	5.40	3.20	2.62	1	1	7.48	7	Coil	1-1/4	230
38225	10000	5.40	3.20	2.62	1	1-1/2	7.48	7	Coil	1-1/2	470
38235	10000	5.40	3.20	2.62	1	1	7.48	7	Acme	1-1/4	230
38245	10000	5.40	3.20	2.62	1	1-1/2	7.48	7	Acme	1-1/2	470
38865	15000	6.75	4	3.28	1-1/4	1	9.35	9	Coil	1-1/4	230
38875	15000	6.75	4	3.28	1-1/4	1-1/2	9.35	9	Coil	1-1/2	470
38885	15000	6.75	4	3.28	1-1/4	1	9.35	9	Acme	1-1/4	230
38895	15000	6.75	4	3.28	1-1/4	1-1/2	9.35	9	Acme	1-1/2	470



Thread Clean-Out Tool

Used to clean out dirt or other foreign matter from thread of nuts

Diameter	Part No. Coil
1-1/4	48956
1-1/2	48843
Available in other thread sizes	



Welding Fixture

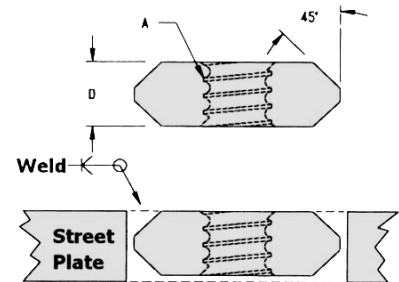
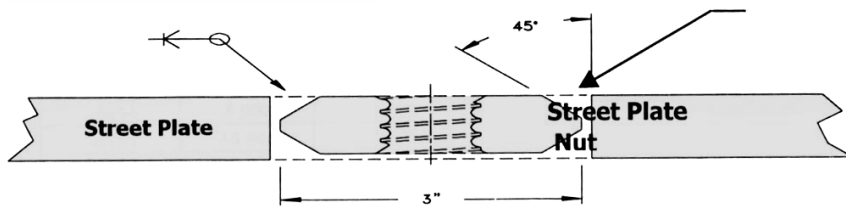
Used to hold the nut in place (flush and perpendicular to the street plate surface) to ease in the tacking of the nut.

Diameter	Part No. Coil
1-1/4	48960
1-1/4 Long	48960-L
1-1/2	48963
1-1/2 Long	48963-L
Available with either 4-1/2" or 13" Legs 13" referred to as "Long"	

Street Plate Nut



- **Material: Alloy Certified Aircraft Quality**
- **Finish: Phosphate per DOD-P-16232F**
- **Magnetic Particle Inspected**
- **Certified Heat Treatment**
- **Welding Rod- Alloy #7018**
- **Patented - File #6,231,267**



***NOTE:** After the nut has been welded to the plate, surfaces of the weld must be ground to the same surface level as the trench plate. This procedure allows the hoist ring to sit flush against the trench plate surface. Not doing so will cause the hoist ring not to sit properly and will lead to usage failure.

Part No.	Thread Type	Thread Size (A)	B	C	D
48801	Coil	1"-3.5	3	2-1/8	3/4
48802	Coil	1"-3.5	"	"	7/8
48803	Coil	1"-3.5	"	"	1
48812	Coil	1-1/4"-3.5	"	"	3/4
48815	Coil	1-1/4"-3.5	"	"	7/8
48822	Coil	1-1/4"-3.5	"	"	1
48816	Coil	1-1/4"-3.5	"	"	1-1/4
48817	Coil	1-1/4"-3.5	"	"	1-1/2
48804	Coil	1-1/2"-3.5	3-1/2	2-3/8	1
48806	Coil	1-1/2"-3.5	"	"	1-1/4
48856	Coil	1-1/2"-3.5	"	"	1-1/2
48820	Acme	1-1/4"-5	3	2-1/8	1
48824	Acme	1-1/2"-5	3-1/2	2-3/8	1-1/2
48821	UNC	3/4"-10	3	2-1/8	1
48823	UNC	1"-8	"	"	"
48825	UNC	1-1/4"-7	"	"	"
48827	UNC	1-1/2"-6	3-1/2	2-3/8	1-1/2
48829	UNC	2"-4-1/2	"	"	"

