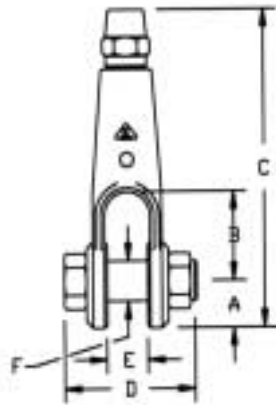




Electroline Fittings

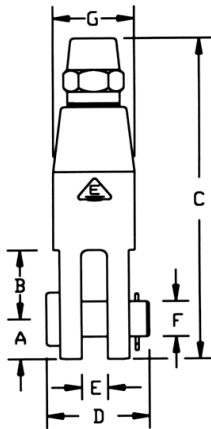
Open Forged Socket



Forged Series: Clevis Socket Specifications

Rope Size	Self- Colored Steel PIN#	Galvanized Steel	A	B	C	D	E	F
1/4	GD-125-N	GD-125-X	11/16	1-1/4	4-1/2	1-23/32	17/32	1/2
5/16	GD-131-N	GD-131-X	13/16	1-1/2	5-3/8	2-1/32	11/16	9/16
3/8	GD-137-N	GD-137-X	13/16	1-1/2	5-1/2	2-5/32	11/16	5/8
7/16	GD-143-N	BD-143-X	1-1/16	2	7-3/16	2-29/32	1	3/4
1/2	GD-150-N	GD-150-X	1-1/16	2	7-3/16	2-31/32	1	7/8
9/16	GD-156-N	GD-156-X	1-1/4	2-1/2	8-5/8	3-7/16	1-1/4	1
5/8	20-GD-162N-O1	GD-162-X	1-1/4	2-1/2	8-5/8	3-7/16	1-1/4	1
3/4	24-GD-175-N-O1	GD-175-X	1-7/16	3	10-3/16	4	1-1/2	1-1/8
7/8	GD187-N	GD-187-X	1-5/8	2-5/8	11	4-3/8	1-9/16	1-1/4
1	GD-199-N	GD-199-X	1-13/16	2-7/8	12-11/16	4-7/8	1-7/8	1-1/2
1-1/8	GD-1112-N	GD-1112-X	2-3/16	3-5/16	17	5-5/8	1-15/16	1-13/16
1-1/4	GD-1125-N	GD1125-X	2-3/16	3-5/16	17	5-5/8	1-15/16	1-13/16

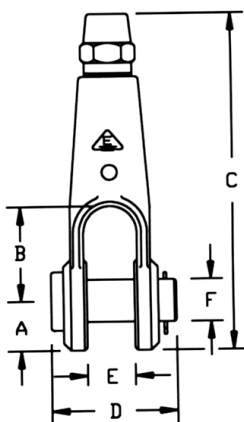
Open Machined Socket



Machined Series: Clevis Socket Specifications

Rope Size	Self Colored Steel PIN #	Zinc Plated Steel	Stainless Steel	Bronze	A	B	C	D	E	F	G
1/16	ID-106-N	ID-106-V	IS-106	IZ-106	17/64	3/8	2-1/16	43/64	3/16	3/16	1/2
3/32	ID-109-N	ID-109-V	IS-109	IZ-109	5/16	1/2	2-7/16	13/16	1/4	1/4	5/8
1/8	ID-112-N	ID-112-V	IS-112	IZ-112	5/16	1/2	2-7/16	13/16	1/4	1/4	5/8
5/32	ID-115-N	ID-115-V	IS-115	IZ-115	3/8	5/8	2-31/32	63/64	5/16	5/16	3/4
3/16	ID-118-N	ID-118-V	IS-118	IZ-118	3/8	5/8	2-31/32	63/64	5/16	5/16	3/4
7/32	ID-121-N	ID-121-V	IS-121	IZ-121	15/32	3/4	3-23/32	1-9/64	3/8	3/8	15/16
1/4	ID-125-N	ID-125-V	IS-125	IZ-125	15/32	3/4	3-23/32	1-9/64	3/8	3/8	15/16
9/32	ID-128-N	ID-128-V	IS-128	IZ-128	17/32	7/8	4-1/4	1-19/64	3/8	7/16	1-1/16
5/16	ID-131-N	ID-131-V	IS-131	IZ-131	17/32	7/8	4-1/4	1-19/64	3/8	7/16	1-1/16
3/8	ID-137-N	ID-137-V	IS13700031	IZ-137	5/8	1	4-27/32	1-31/64	7/16	1/2	1-3/16
7/16	ID-143-N	ID-143-V	IS-143	IZ-143	23/32	1-1/4	5-5/8	1-11/16	7/16	5/8	1-3/8
1/2	ID-150-N	ID-150-V	IS15000031	IZ-150	51/64	1-3/8	6-11/32	1-59/64	1/2	11/16	1-9/16
9/16	ID-156-N	ID-156-V	IS-156	IZ-156	1-3/64	1-17/32	7-19/32	2-5/32	11/16	15/16	2
5/8	ID-162-N	ID-162-V	IS-162	IZ-162	1-3/64	1-17/32	7-19/32	2-5/32	11/16	15/16	2
3/4	ID-175-N	ID-175-V	IS-175	IZ-175	1-15/64	1-27/32	8-29/32	2-7/16	3/4	1-1/8	2-5/16
7/8	ID-187-N	ID-187-V	IS-187	IZ-187	1-7/16	1-7/8	10-3/16	2-47/64	13/16	1-1/4	2-5/8
1	ID-199-N	ID-199-V	IS-199	IZ-199	1-3/4	2-1/4	12	3-7/64	15-16	1-1/2	3

Extra-Strength Open Forged Socket



Extra Strength Series: Clevis Socket with Pin and Cotter Pin Specifications

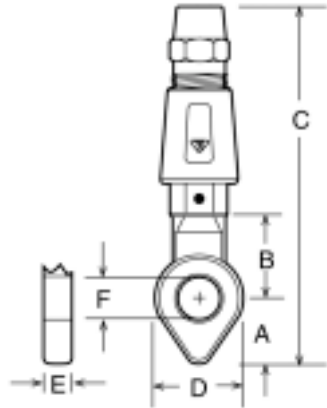
Rope Size	Self Colored Steel PIN#	Galvanized Steel	A	B	C	D	E	F
7/16	PD-143-N	PD-143X	1-1/16	2	7-3/16	2-19/32	1	1
1/2	PD-150-N	PD-150-X	1-1/16	2	7-3/16	2-19/32	1	1
9/16	PD-156-N	PD-156-X	1-1/4	2-21/2	8-5/8	3-11/64	1-1/4	1-13/16
5/8	PD-162-N	PD-162-X	1-14	2-1/2	8-5/8	3-1164	1-1/4	1-3/16
3/4	PD-175-N	PD-175-X	1-7/16	3	10-3/16	3-11/16	1-1/2	1-3/8
7/8	PD-187-N	PD187-X	1-15/16	2-7/8	12-11/16	4-7/8	1-7/8	1-1/2
1	PD-199-N	PD-199-X	2-3/16	3-5/16	17	5-5/8	1-15/16	1-13/16

NOTE: Extra Strength Fittings rated at 100% RBS of Extra- Improved Plow Steel Wire Rope.

LARGER SIZES AVAILABLE-PLEASE CONTACT FACTORY.



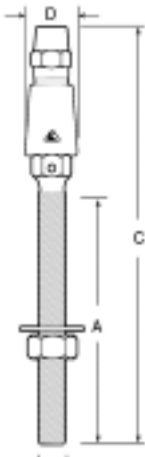
Closed Forged Socket



Forged Series: Eye Socket Specifications

Rope Size	Self Colored Steel PIN#	Galvanized Steel	A	B	C	D	E	F
1/4	GD-225-N	GD-225-X	13/16	1-3/16	4-3/8	1-5/32	1/2	17/32
5/16	GD-231-N	GD-231-X	1-1/16	1-3/8	5-3/8	1-5/16	9/16	19/32
3/8	GD-237-N	GD-237-X	1-1/16	1-3/8	5-1/2	1-5/16	9/16	19/32
7/16	GD-243-N	GD-243-X	1-5/16	1-11/16	6-7/8	1-3/4	3/4	25/32
1/2	GD-250-N	GD-250-X	1-5/16	1-11/16	6-7/8	1-3/4	3/4	29/32
9/16	GD-256-N	GD-256-X	1-11/16	2-3/8	9-1/2	2-1/4	1-1/16	1-5/32
5/8	GD-262-N	GD-262-X	1-11/16	2-3/8	9-1/2	2-1/4	1-1/16	1-5/32
3/4	GD-275-N	24GD275X01	1-11/16	2-3/8	9-1/2	2-1/4	1-1/16	1-5/32
7/8	GD-287-N	GD-287-X	1-7/8	2-13/16	11-1/8	2-5/8	1-5/16	1-9/32
1	GD-299-N	GD-299-X	2-1/4	3-1/4	12-7/8	3	1-9/16	1-17/32

Forged Threaded Stud

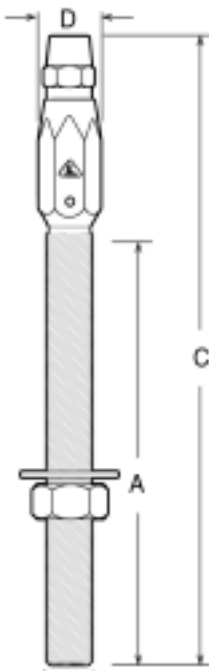


Forged Series: Stud Socket Specifications

Forged Series: Stud Socket Assembly						
Rope Size	Self Colored Steel PIN#	Galvanized Steel	A	C	Coarse Thread	D
1/4	GD-325-N	GD-325-X	4-3/16	7-3/8	1/2-13	1
5/16	GD-331-N	GD-331-X	4-3/16	7-9/16	1/2-13	1
3/8	GD-337-N	GD-337-X	4-1/2	8-1/4	5/8-11	1-1/8
7/16	GD-343-N	GD-343-X	6-3/8	10-15/16	3/4-10	1-1/2
1/2	GD-350-N	16GD350X01	6-3/8	10-15/16	3/4-10	1-1/2
9/16	GD-356-N	GD-356-X	8-1/8	13-7/8	7/8-9	1-13/16
5/8	GD-362-N	GD-362-X	8-1/8	13-7/8	7/8-9	1-13/16
3/4	GD-375-N	GD-375-X	8-5/8	15-1/4	1-1/8-7	2-1/4
7/8	GD-387-N	GD-387-X	9	16-5/8	1-1/4-7	2-5/8
1	GD-399-N	GD-399-X	12-1/8	21-5/16	1-1/2-6	3

NOTE: * For all other stud dimensions, consult factory.

Machined Threaded Stud



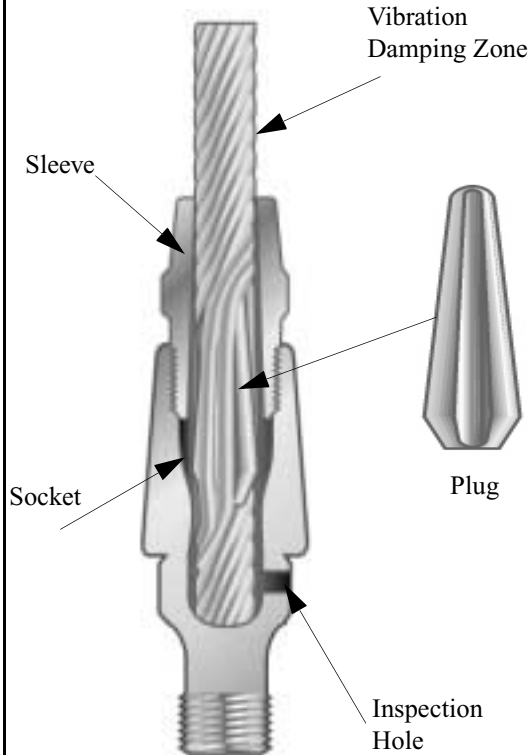
Machined Series: Stud Specifications

Rope Size	Self Colored Steel PIN#	Zinc Plated Steel	Stainless Steel	Bronze	A	C	Fine Thread	D
1/16	ID-306-N	ID-306-V	IS-306	IZ-306	1-19/32	3-1/32	10-32	1/2
3/32	ID-309-N	ID-309-V	IS-309	IZ-309	1-7/8	3-1/2	1/4-28	9/16
1/8	ID-312-N	ID-312-V	IS-312	IZ-312	1-7/8	3-1/2	1/4-28	9/16
5/32	ID-315-N	ID-315-V	IS-315	IZ-315	2-3/16	4-3/16	3/8-24	11/16
3/16	ID-318-N	ID-318-V	IS-318	IZ-318	2-3/16	4-3/16	3/8-24	11/16
7/32	ID-321-N	ID-321-V	IS-321	IZ-321	4-9/16	7-1/16	1/2-20	7/8
1/4	ID-325-N	ID-325-V	IS-325	IZ-325	4-9/16	7-1/16	1/2-20	7/8
9/32	ID-328-N	ID-328-V	IS-328	IZ-328	4-9/16	7-1/2	5/8-18	1
5/16	ID-331-N	ID-331-V	IS-331	IZ-331	4-9/16	7-1/2	5/8-18	1
3/8	ID-337-N	ID-337-V	IS-337	IZ-337	4-15/16	8-3/16	3/4-16	1-1/8
7/16	ID-343-N	ID-343-V	IS-343	IZ-343	6-15/16	11	7/8-14	1-5/16
1/2	ID-350-N	ID-350-V	IS-350	IZ-350	6-15/16	11	7/8-14	1-1/2
9/16	ID-356-N	ID-356-V	IS-356	IZ-356	8-5/8	15-5/64	1-1/8-7	1-1/16
5/8	ID-362-N	ID-362-V	IS-362	IZ-362	8-5/8	15-5/64	1-1/8-7	1-11/16
3/4	ID-375-N	ID-375-V	IS-375	IZ-375	9-1/4	16-3/4	1-1/4-7	2
7/8	ID-387-N	ID-387-V	IS-387	IZ-387	9-3/4	18-35/64	1-1/2-6	2-1/4
1	ID-399-N	ID-399-V	IS-399	IZ-399	12-3/4	23-7/64	1-3/4-5	2-5/8
1-1/8	IGD-3112-N	IGD-3112-V	IGS-3312	IGZ-3112	13-1/8	25-1/16	1-3/4-5	3
1-1/4	IGD-3125-N	IGD-3125-V	IGS-3125	IGZ-3125	13-1/8	26-11/16	1-3/4-5	3-1/2
1-3/8	IGD-3137-N	IGS-3137-V	IGS-3137	IGZ-3137	16-5/8	34-7/16	2-4-1/2	4
1-1/2	IGD-3150-V	IGS-3150-V	IGS-3150	IGZ-3150	16-5/8	34-7/16	2-4-1/2	4

NOTE: *For other stud dimensions, consult factory.



TYPICAL ASSEMBLY



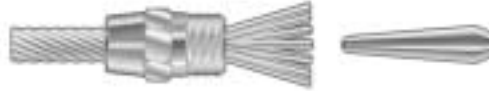
Electroline fittings are the first real advance in connecting practices since the development of wire rope. These fittings are remarkably compact assemblies of three basic units:

- 1. The SLEEVE, which slips over the end of the rope.**
- 2. The PLUG, which is inserted to separate and hold the rope strands in the sleeve.**
- 3. The covering SOCKET**

The combination of these three units literally locks the rope into a strong, solid assembly.



SLEEVE: Wire rope passed through sleeve.



SLEEVE & PLUG: Strands fanned out to insert plug.



SLEEVE, PLUG & SOCKET: Plug driven in and strands closed to apply socket.



COMPLETED ASSEMBLY: With socket applied, twisted strands are visible through inspection hole.

SAFE WORKING LOADS

Electroline terminations, when properly assembled, will hold the “normal” or “rated” breaking strength of IPS wire rope. They are certified by the “Underwriters Laboratory, Inc.” (Safety Appliance No. 799). **Fittings are designed for linear loads only.**

Electroline terminations are NOT marked with safe working load (SWL) as the termination is a component of an assembly which includes the wire rope. Due to the many different types of ropes with which our termination may be used, the safe working load is dependent upon the type of rope and the usage. Please contact our engineering department to answer any questions regarding the suitability of Electroline Products for your use.

Electroline terminations are designed to have a breaking strength greater than 6 x 19 IPS IWRC wire rope of the corresponding size. Our safety factor is 1.3 for the steel machined fittings, and 2.0 for the forged steel clevis and eye assemblies. However, the rope is the weakest component of the assembly, and these safety factors cannot be used to determine the SWL of the assembly.